

UW LINK STUDY

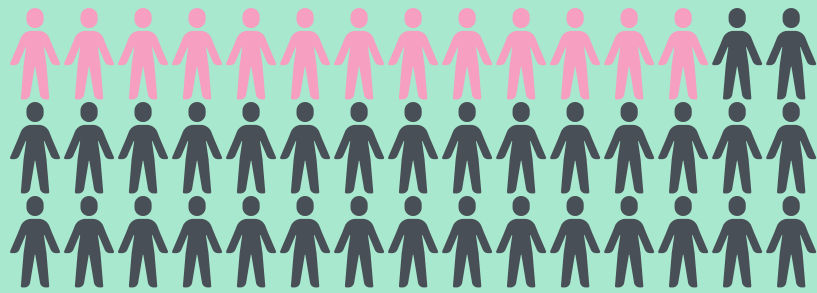


University of Wisconsin
Longitudinal Imaging and
Neurogenetics Study in Kids

BACKGROUND:

30-75%

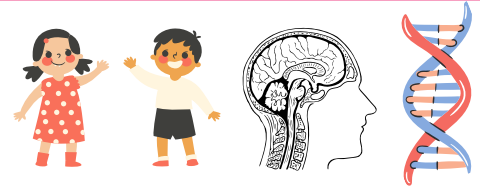
of autistic children have symptoms of attention deficit hyperactivity disorder (ADHD)



We want to understand more about why!

WHAT WE'LL LOOK AT:

We are researching autistic children's behaviors, brain images, and DNA to study why this occurs.



WHAT THE STUDY INVOLVES:

- We are recruiting children 4 to 7 years old with a diagnosis of autism spectrum disorder.
- We will follow your child's development over the course of 3 years.
- Each study visit will last 3.5-4 hours and include cognitive activities, saliva sample, 10 minute MRI scan, and parent interview and questions.

**1 VISIT PER
YEAR FOR 3
YEARS**



COMPENSATION:

- Year 1, families will receive up to \$120 for completed participation. Years 2 and 3 will include an additional bonus for continued participation each year.
- Mileage reimbursement and travel support is available.
- Your child will also be able to pick a toy prize!



INTERESTED AND WANT TO FIND OUT MORE?

Do you have a child with autism and are interested in participating in our research? Fill out our online interest form!

Have questions? Want to learn more?
Please contact Dr. James Li and
Dr. Brittany Travers' study team at:



(608) 265-7938



UWLINKSTUDY@WAISMAN.WISC.EDU